

WIU7 CLAIRVIEW SCHOOL PAGING SYSTEM REPLACEMENT

WESTMORELAND INTERMEDIATE UNIT 7
215 DONOHOE RD GREENSBURG, WESTMORELAND, PA, 15601

DRAWING INDEX	
DRAWING NO	
ELECTRICAL	
E100	ELECTRICAL SYMBOLS, SCHEDULES & DETAILS
E101	PAGING SYSTEM FLOOR PLAN



470 Washington Road, Pittsburgh, PA 15228
412.561.7117 www.DRAWcollective.com

Contact: DAN ENGEN
Email:
DANIELE@DRAWCOLLECTIVE.COM

MEP ENGINEER
TOWER ENGINEERING
115 Evergreen Heights Dr
Pittsburgh, PA 15229
Company Phone: (412) 931-8888

LOCATION MAP:



PROJECT / CLIENT INFO:

PROJECT ADDRESS:
215 DONOHOE RD
GREENSBURG, PA, 15601

CLIENT INFO:
WESTMORELAND INTERMEDIATE UNIT 7
102 EQUITY DRIVE
GREENSBURG, PA, 15601

REVISIONS



WIU7 CLAIRVIEW SCHOOL PAGING SYSTEM REPLACEMENT
WESTMORELAND INTERMEDIATE UNIT 7

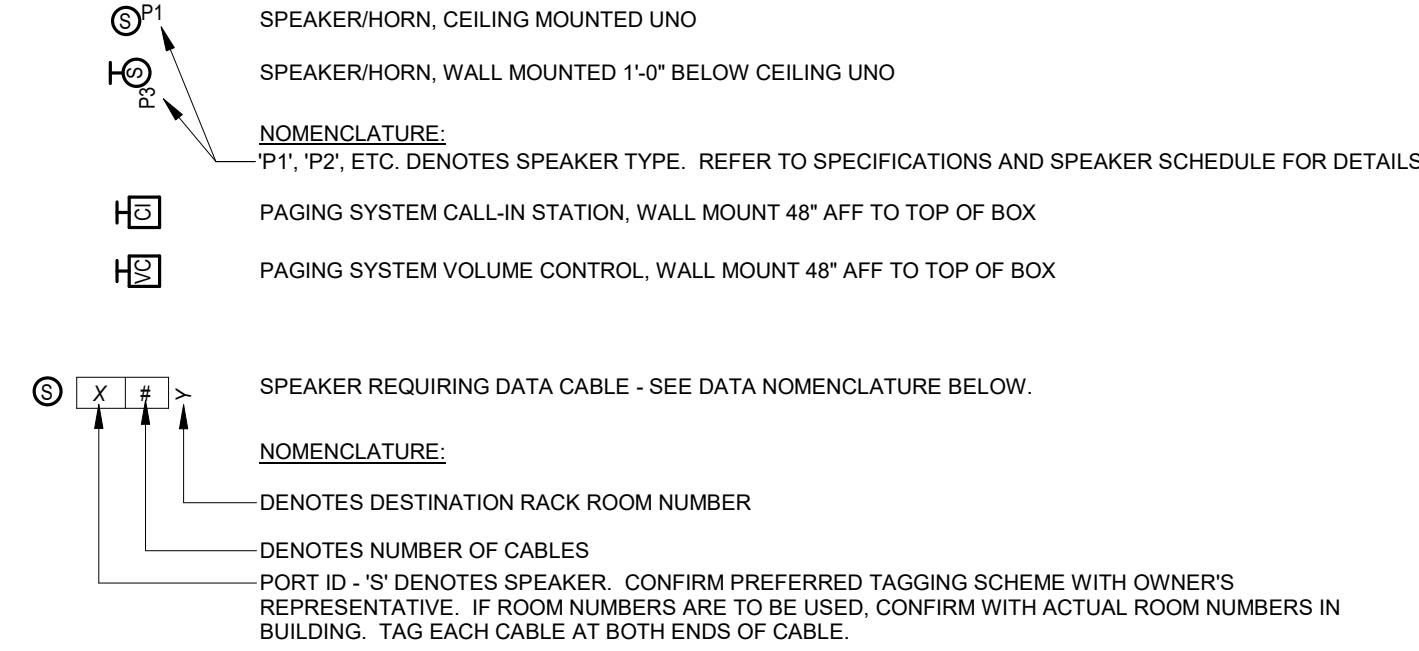
COVER SHEET

Proj No. 25-S50-02
Issue Date 09/15/2025
© Copyright 2024
CS100

GENERAL NOTES

- A. LOCATION OF ALL EQUIPMENT AND DEVICES:**
1. OBTAIN WRITTEN APPROVAL OF LOCATIONS OF ALL ELECTRICAL DEVICES FROM THE OWNER AND THE ARCHITECT PRIOR TO ROUGH-IN. THE OWNER RESERVES THE RIGHT TO MOVE ANY OR ALL ELECTRICAL DEVICES PRIOR TO ROUGH-IN, AT NO ADDITIONAL COST.
- B. CUTTING AND PATCHING:**
1. ALL OPENINGS IN EXISTING STRUCTURAL ELEMENTS, REQUIRED FOR COMPLETION OF THE CONTRACT (SUCH AS FLOORS, WALLS, CEILINGS, AND ROOFS), SHALL BE CUT AND/OR PATCHED BY THE ELECTRICAL CONTRACTOR.
2. CONTRACTOR TO REMOVE AND REINSTALL CEILING TILES AS REQUIRED FOR DEMOLITION AND INSTALLATION WORK DESCRIBED ON THIS DRAWING. CONTRACTOR TO INFORM OWNER OF ANY EXISTING DAMAGE TO CEILING TILES PRIOR TO REMOVAL.
3. CONTRACTOR IS RESPONSIBLE FOR CUTTING CEILING TILES IN ORDER TO ACCOMMODATE DEVICES INSTALLED UNDER THIS CONTRACT.
- C. LOW VOLTAGE SYSTEM INSTALLATION:**
1. PROVIDE ALL AUXILIARY DEVICES SUCH AS TIE BARS, CABLE SUPPORTS, SURFACE RACEWAY, CONDUIT, RACEWAYS, INTER DUCT, ETC. THAT ARE NOT SHOWN BUT ARE REQUIRED FOR A COMPLETE INSTALLATION.
2. PROVIDE ALL CONDUIT, BACKBOXES, AND POWER SOURCES FOR EQUIPMENT AS REQUIRED FOR A COMPLETE INSTALLATION.
3. CONCEAL ALL CABLES WHEREVER POSSIBLE. WHEN CABLE CANNOT BE CONCEALED IN FINISHED AREAS, THE PROVIDE CONDUIT AND/OR SURFACE MOUNTED RACEWAY (WHERE APPROVED BY ARCHITECT).
4. CABLE RUN OPEN IN WALLS AND ABOVE DROPPED CEILINGS SHALL BE SUPPORTED EVERY 4 TO 5 FT. WITH PROPER CABLE SUPPORTS, PANDUIT J-MOD CABLE SUPPORT SYSTEM, OR EQUAL AS INDICATED IN SPECIFICATIONS.
5. PLASTIC TIEWARS ARE NOT PERMITTED. USE PANDUIT N-TRIP-LOCK & LOOP CABLE TIES - PLENUM RATED.
6. ALL CABLES INSTALLED ABOVE CEILINGS SHALL HAVE PLENUM RATING.
7. PROVIDE FIRE STOP WHERE CONDUITS, CONDUIT SLEEVES, WIRE WAYS, AND OTHER NETWORK RACEWAYS OR CABLES PASS THROUGH FIRE PARTITIONS, FIRE WALLS, FIRE FLOORS, OR SMOKE WALLS.
8. CONFIRM THE LAYOUT OF ALL PATCH PANELS, WIRING TROUGHS, TERMINAL BLOCKS, HEAD-END EQUIPMENT AND WIRING WITH THE OWNER'S REPRESENTATIVE BEFORE INSTALLATION.
9. REFER TO DIVISION 27 SPECIFICATIONS FOR ADDITIONAL DETAILS AND INFORMATION.
- D. COPPER CABLING SYSTEMS:**
1. HORIZONTAL CABLING FOR THE VOICEDATA COMMUNICATION STRUCTURED CABLING SYSTEM SHALL BE CATEGORY 6 PLENUM RATED CABLE. CATEGORY 6 CABLE SHALL BE TERMINATED ON CATEGORY 6 RATED CONNECTORS AT THE WORKSTATION AND ON CATEGORY 6 RATED PATCH PANELS AT THE MDF.
2. FURNISH ALL CATEGORY 6 PATCH CABLES AT THE MDF. FOR ALL DATA CABLES INSTALLED. PATCH CABLES SHALL BE TURNED OVER TO THE OWNER FOR PATCHING OF DATA NETWORK CONNECTIONS.
3. SYSTEM COMPONENTS SHALL BE OF SAME MANUFACTURER FOR END TO END CHANNEL PERFORMANCE AND SHALL MEET THE WARRANTY AS DESCRIBED IN THE DIVISION 27 SPECIFICATIONS.
4. OUTLET AND CABLE TOTALS ARE TO BE VERIFIED BY TAKE-OFF DEVICE COUNTS PROVIDED ON FLOOR PLANS.
5. SEE SPECIFICATIONS FOR SPECIFIC OUTLET TYPE, COLOR AND COMPONENTS. COORDINATE WITH OWNER AND ENGINEER PRIOR TO ORDERING.
6. FINAL LOCATION OF WORKSTATION OUTLETS SHALL BE CONFIRMED WITH OWNER'S REPRESENTATIVE. CONNECTIONS INTO ROOMS, USING THE SAME NOMENCLATURE ON THE OUTLETS AND TERMINATION PANELS.
7. MAKE ALL FINAL CONNECTIONS AS DIRECTED BY THE OWNER'S REPRESENTATIVE. TAG BOTH ENDS OF ALL WIRES WITH A COMPLETE IDENTIFICATION SCHEME. THE IDENTIFICATION SCHEME SHALL BE REVIEWED AND APPROVED BY THE OWNER'S REPRESENTATIVE DURING CONSTRUCTION. THIS REQUIREMENT SHALL APPLY TO ALL TELEPHONE/DATA CABLES AND CROSS CONNECT CABLES.
8. HORIZONTAL CATEGORY 6 CABLE RUNS SHALL NOT EXCEED 295 FT. FROM TERMINATION PANEL TO OUTLET CONNECTING HARDWARE. IF DURING CONSTRUCTION, DUE TO EXISTING BUILDING CONSTRUCTION, ETC. THIS LENGTH WILL BE EXCEEDED, IT SHALL BE BROUGHT TO THE ATTENTION OF ENGINEER PRIOR TO INSTALLING ANY RACEWAY, CONDUIT, CABLE, ETC.
9. CONDUITS AND SLEEVES FOR TELECOMMUNICATIONS CABLING SHALL BE, AT A MINIMUM, THE FOLLOWING SIZES:
- A. 3/4" - UP TO (2) CAT6 CABLES
- B. 1" - UP TO (4) CAT6 CABLES
- C. 1-1/4" - UP TO (6) CAT6 CABLES
- D. 1-1/2" - UP TO (10) CAT6 CABLES
- E. 2" - UP TO (16) CAT6 CABLES

SYMBOL LEGEND



GENERAL ABBREVIATIONS

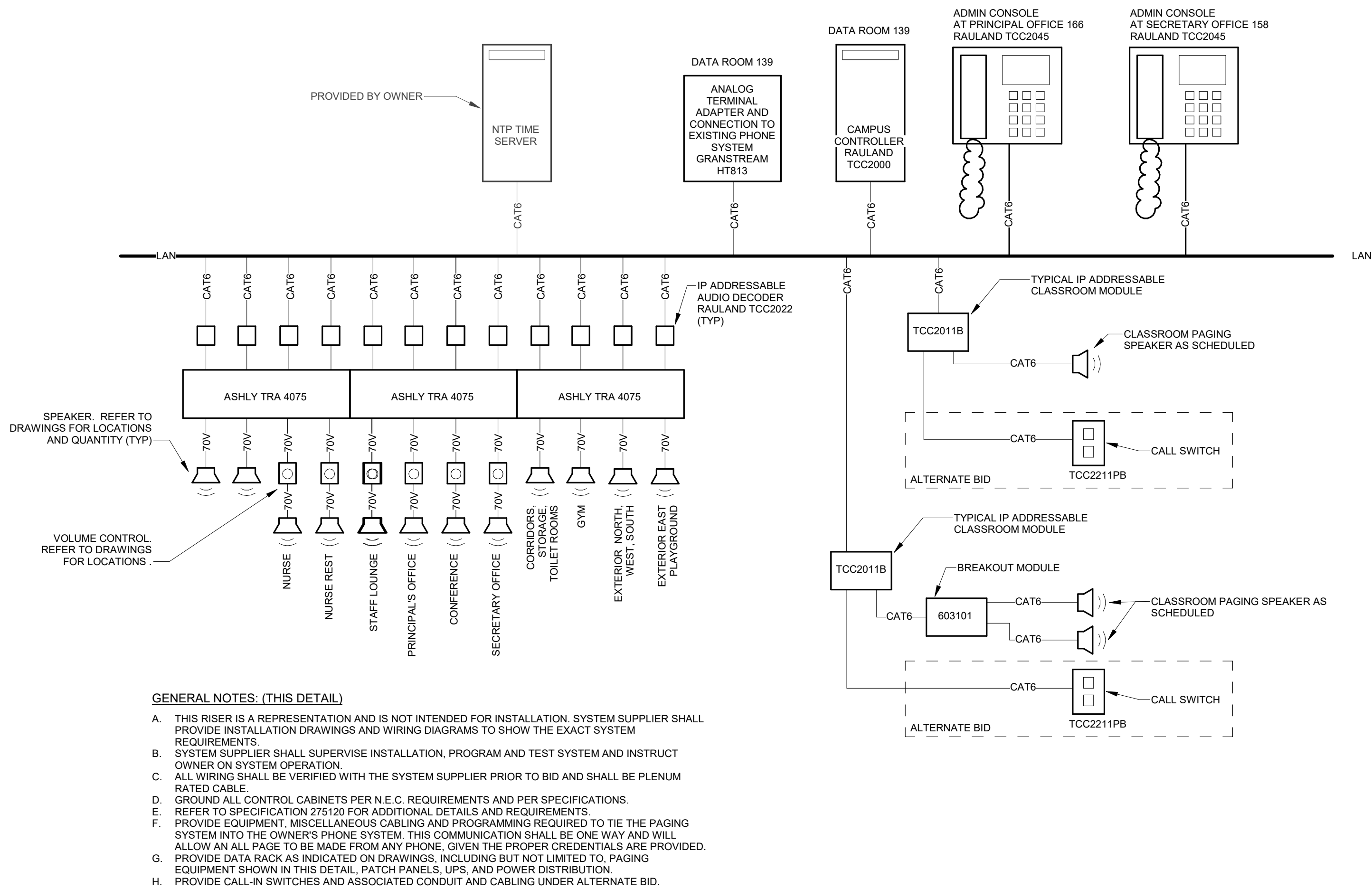
AFF	ABOVE FINISHED FLOOR	NIC	NOT IN THIS CONTRACT
EMT	ELECTRIC METALLIC TUBING	NTS	NOT TO SCALE
EX	EXISTING	TYP	TYPICAL
IN	INCH	UNO	UNLESS NOTED OTHERWISE
JB	JUNCTION BOX	X	EXISTING TO REMAIN
NA	NOT APPLICABLE	XA	EXISTING TO BE REMOVED IN ITS ENTIRETY

SPEAKER SCHEDULE

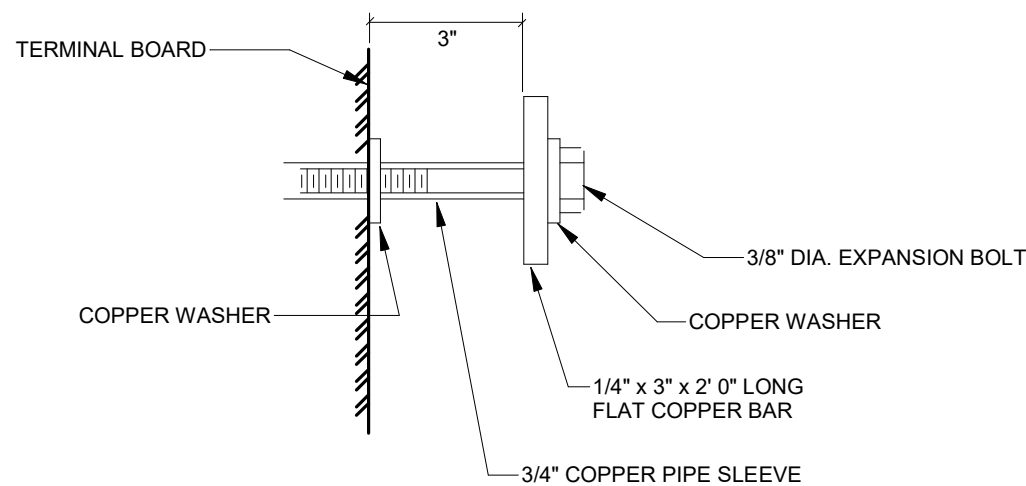
TAG	BASIS OF DESIGN		DESCRIPTION
	MFG	MODEL	
P1	RAULAND	BAKIT1X2SBRJ	RECESSED 1X2 IP ADDRESSABLE SPEAKER ASSEMBLY
P2	RAULAND	BAKIT1X2S	RECESSED 1X2 25V SPEAKER ASSEMBLY
P3	QUAM	SYSTEM 6VP	VANDAL RESISTANT HORN ASSEMBLY WITH INTEGRATED 16W, 2570V MULTI-TAP TRANSFORMER, IN WALL-MOUNTED STEEL SURFACE BACKBOX
P4	QUAM	SYSTEM 6VPS	VANDAL RESISTANT HORN ASSEMBLY WITH INTEGRATED 16W, 2570V MULTI-TAP TRANSFORMER, IN WALL-MOUNTED STAINLESS STEEL SURFACE BACKBOX

TELECOM OUTLET SCHEDULE

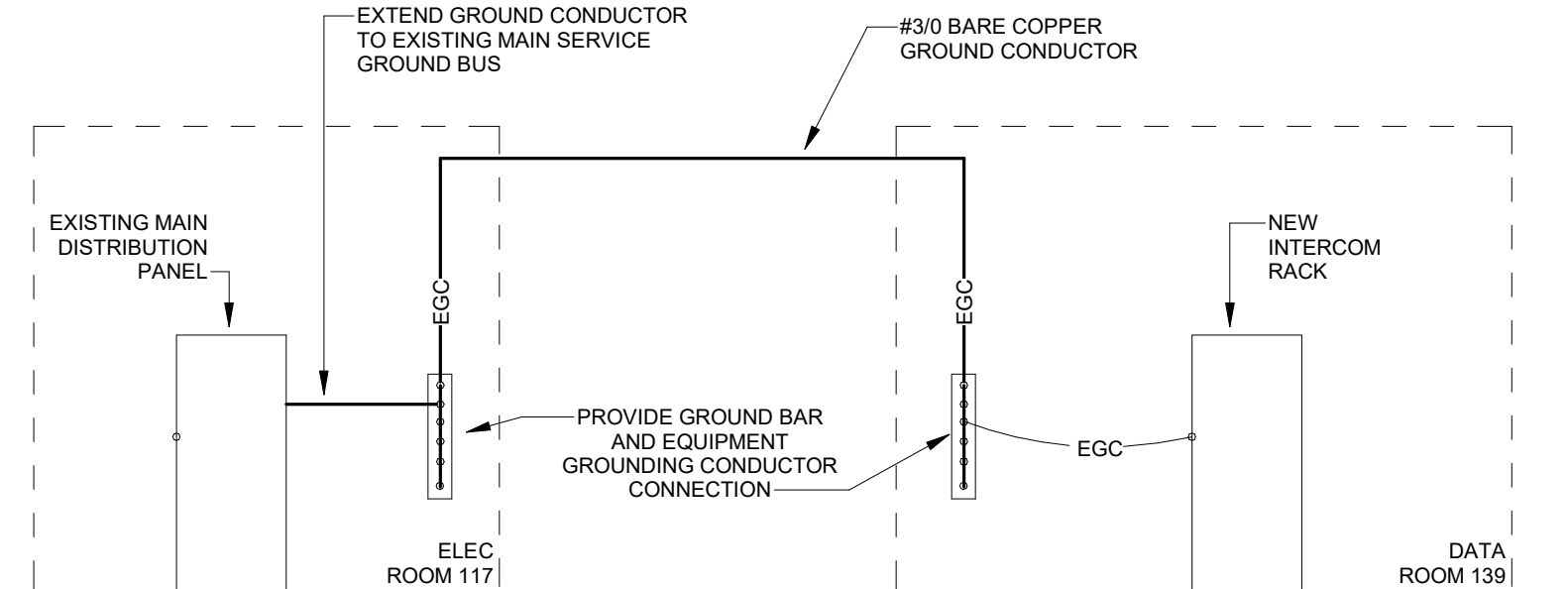
ROOM NUMBER	ROOM NAME	DEVICE	PORT ID	CABLE QTY.	CABLE TYPE
113	CLASSROOM	SPEAKER	S	1	6
114	CLASSROOM	SPEAKER	S	1	6
115	CLASSROOM	SPEAKER	S	1	6
123	OT/PT	SPEAKER	S	1	6
124	CLASSROOM	SPEAKER	S	1	6
125	CLASSROOM	SPEAKER	S	1	6
126	CLASSROOM	SPEAKER	S	1	6
127	CLASSROOM	SPEAKER	S	1	6
129	CLASSROOM	SPEAKER	S	1	6
131	CLASSROOM	SPEAKER	S	1	6
133	HOME-EC ROOM	SPEAKER	S	1	6
134	CLASSROOM	SPEAKER	S	1	6
135	CLASSROOM	SPEAKER	S	1	6
136	CLASSROOM	SPEAKER	S	1	6
141	VISION/TECH/SICK ROOM	SPEAKER	S	1	6
142	SPEECH	SPEAKER	S	1	6
143	CLASSROOM	SPEAKER	S	1	6
144	CLASSROOM	SPEAKER	S	1	6
145	OT/PT STORAGE	SPEAKER	S	1	6
146	STORAGE	SPEAKER	S	1	6
147	CLASSROOM	SPEAKER	S	1	6
148	CLASSROOM	SPEAKER	S	1	6
149	CLASSROOM	SPEAKER	S	1	6
151	CLASSROOM	SPEAKER	S	1	6
153	CLASSROOM	SPEAKER	S	1	6
155	CLASSROOM	SPEAKER	S	1	6
156	CLASSROOM	SPEAKER	S	1	6
157	CLASSROOM	SPEAKER	S	1	6
170	BOYS ROOM	SPEAKER	S	1	6
172	GIRLS ROOM	SPEAKER	S	1	6
178	SERVING KITCHEN	SPEAKER	S	1	6
Grand total				31	



PAGING SYSTEM RISER DIAGRAM
NOT TO SCALE



COPPER GROUND BUS MOUNTING
NOT TO SCALE



- GENERAL NOTES: (THIS DETAIL)**
- A. REFER TO SPECIFICATION SECTION 270526 FOR ADDITIONAL REQUIREMENTS.
- B. THE EQUIPMENT GROUNDING CONDUCTORS (EGC) SHALL BE #14AWG COPPER CONDUCTORS. INSTALL EGC PER NEC 250-90.
- C. REFER TO DETAIL 2/E100 FOR GROUND BAR REQUIREMENTS.

TELECOMMUNICATIONS GROUNDING DETAIL
NOT TO SCALE

